



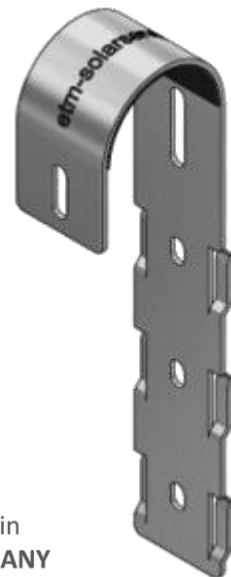
SOLAR-HOOK – the etm fastening system

double safety. easy to install. all in package

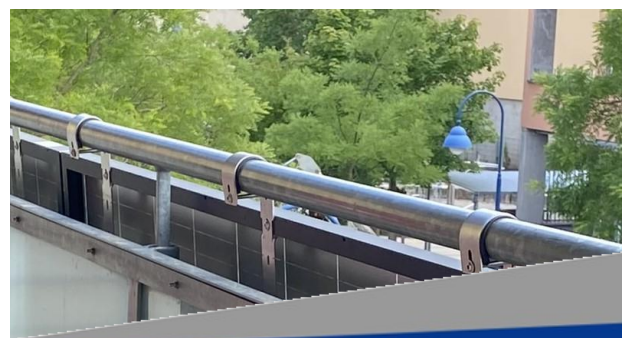
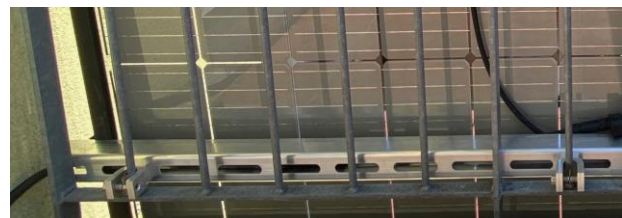
SOLAR-HOOK – the etm fastening system
especially developed for PV balconies

Your advantage:

- Hang solar modules on the balcony railing, similar to flower boxes.
- Double safety by means of flaps and screws.
- Max. flexibility when aligning the solar panel
- No structural changes to the balcony railing necessary
- Microinverter to be mounted directly to the SOLAR-HOOK
- High-quality components - V2A - Aluminium – Plastics
- All necessary parts in one set
- All screws and small parts included



 **100%**
made in
GERMANY



SOLAR-HOOK – the etm fastening system

double safety . easy to install . all in package

Technical data

Solar-Hook

certified
mounting bracket
including suitable
screws



Dimensions: 209x54x38 mm (LxWxD), 2 mm thickness
Weight: 175 g per mounting bracket
With moulded flaps and phase as insertion aid for individual installation to the solar panel as well as screws M6x16 and M6x65 with fitting nuts and washers



E-clamps Type_E rectangular vertical balcony bars

Aluminium, with an allen screw (Torx-30 internal thread) - opening 14mm x 30mm (WxD) and M8-thread incl. M8x16 stainless steel screw A2-70, full thread, hexagon with flange and locking teeth (not shown)



R-clamps Type_R Round vertical balcony bars

Aluminium with a pair of fixing screws directed against each other, threaded hole M8, opening 24x36mm (WxD) and stainless steel screw as above, plus fitting V2A-arch (not shown)



Photovoltaic- mounting rail

extremely strong, to fix the panel at its lower end, Aluminium, 52x47mm (WxH), length 1,78 m (adjustable)



Module-end clamps/ - mid clamps

PV module clamps with slip-in profile, Aluminium, and EPDM-pad, pre-mounted incl. screw, black anodized, module frame 34-42mm



Materials

Solar-Hook: DIN EN 1090-2 stainless steel 1.4301/1.4307 according to DIN EN 10088-4 (A2)

Screws and nuts: mushroom head bolt with collar and force application hexagon socket ISK 4 M6x16 and M6x65 from A2-070 according to DIN EN ISO 7380-2, mushroom head bolt with collar and force application hexalobular TX30 M6x16 and M6x65 from A2-070 according to DIN 34805-2, hexagon nuts with flange and und slip-in profile M6 from A2-70 according to DIN 6926 resp. DIN EN 1663, hexagon nuts with flange M6 from A2-70 according to DIN 6923 resp. DIN EN 1661

For more information see installation manual – preparation and assembly of the etm fastening system on www.solar-hook.de

